

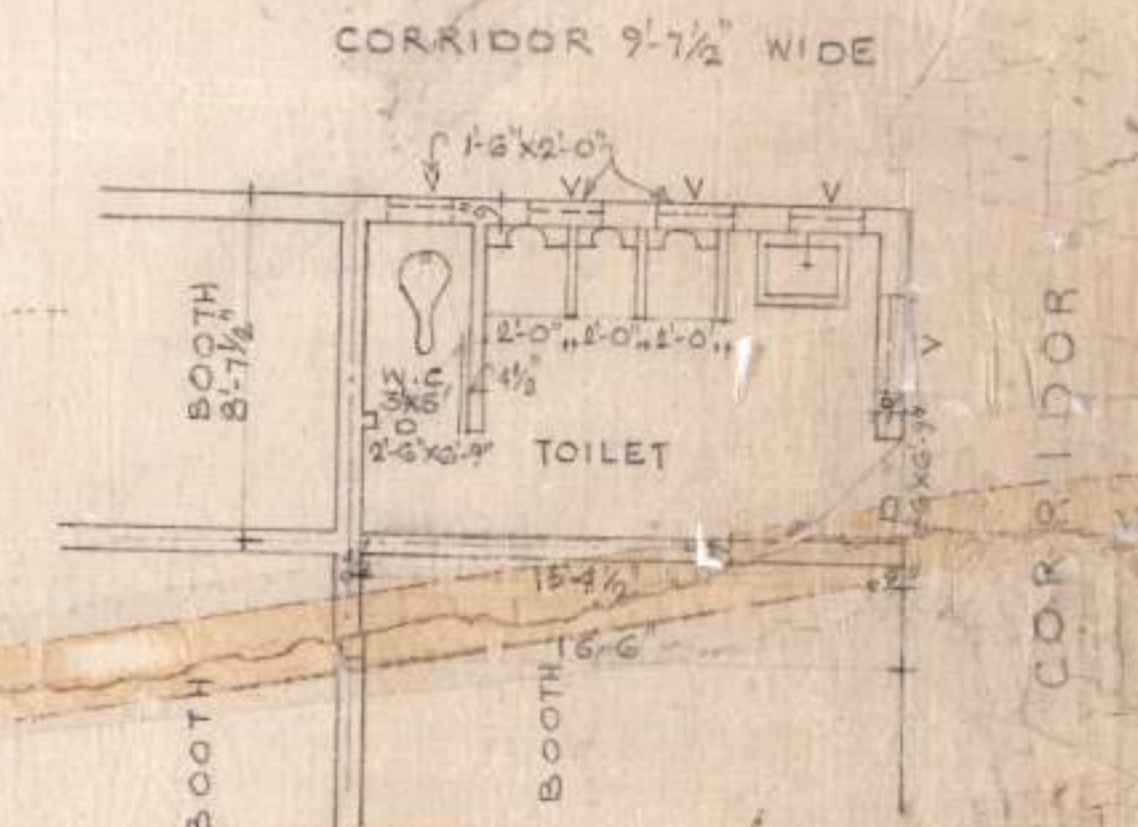
REVISED DETAILED LAYOUT PLAN OF
COMMERCIAL AREA AT INDUSTRIAL
FOCAL POINT PHASE VII S.A.S.
NAGAR.

THIS SUPERSEDES PREVIOUS DRG. NO
P1/COMMERCIAL/28/80 DT. 5-8-80

TOTAL AREA OF THE SCHEME = 7.40 ACS

DETAIL OF AREA :-

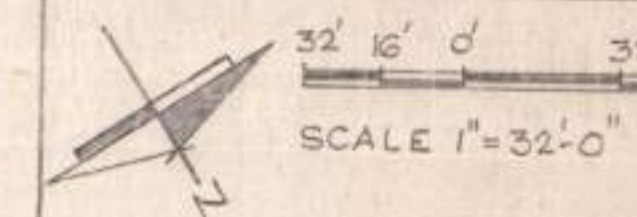
S.NO.	DESCRIPTION	SIZE	NO	AREA IN SQ. YDS
1	SHOP CUM SERVICE INDUSTRIES	33'-0" X 165'-0"	9	3745.00
2	SHOP CUM FLATS	16'-6" X 66'-0"	13	1573.00
3	BOOTH	8'-3" X 24'-9"	88	1320.00
			147	1257.00



DETAIL OF TOILET.

NOTE: -
NUMBERS OF THE LAYOUT PLAN, HAS FINALISED AFTER DISCUSSION WITH
THE D.T.P. ON 26.7.82.

OFFICE OF
THE CHIEF ENGINEER
PUNJAB STATE SMALL INDUSTRIES CORPORATION LTD.
BATRA BUILDING, SECTOR-17, CHANDIGARH.



JOB NO./ORG. NO.
P1/COMMERCIAL-29/81

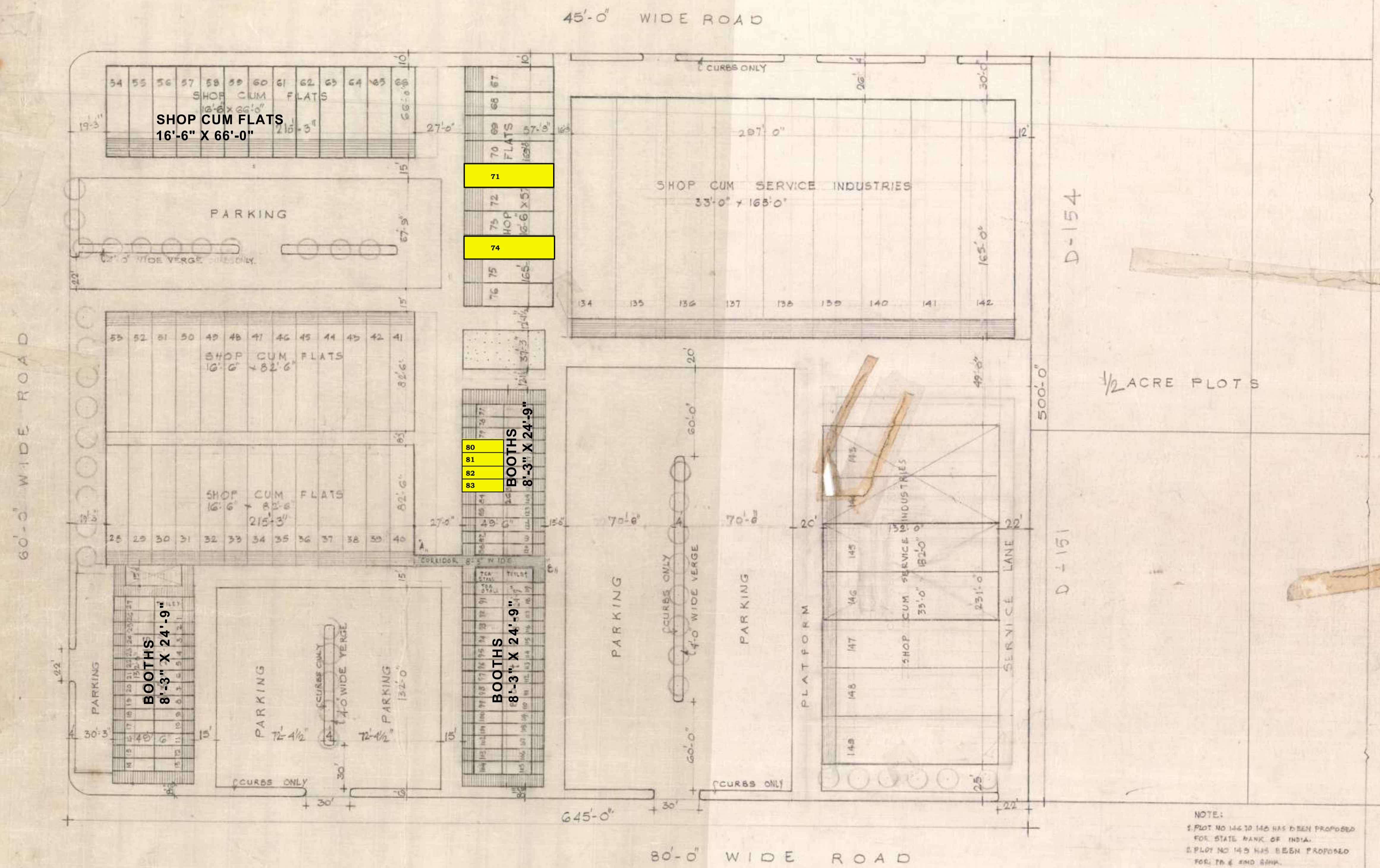
N. Arrow

DATE :- 5.2.1981.

DRAWN BY.

S.P.S.C.
23/2/81
DIVISIONAL TOWN PLANNER

CHIEF ENGINEER



NOTE:
1. PLOT NO 146 TO 148 HAS BEEN PROPOSED FOR STATE BANK OF INDIA.
2. PLOT NO 145 HAS BEEN PROPOSED FOR T.B. & S.M. SHM.
3. SHADED CORRIDOR FROM POINT A TO B WILL BE CONST. BY P.S.I.C.

PUBLIC BUILDINGS